



NEWSLETTER

Website: www.strathgardenclub.com.au

Email: strathalbyngardenclub@gmail.com

Phone contact: 0416 173 573

Issue No: 149

August
2016

From The President,

The act of gardening often leaves the mind free to think about the big issues of life.

Recently I caught myself thinking "Why?" Why do we clear land, dig, rake and level; then plant, water, fertilise and mulch before cutting back or even digging out and then start the process over again? What was so wrong with the original landscape that we felt the need to re-arrange it?

Fortunately I was distracted from this destructive train of thought by the perfume of my flowering prunus and the variety in colour and form of a bed of daffodils!

Spring is such a lovely season in the garden, full of surprises as bulbs long since planted and forgotten start to flower and the fruit trees start to blossom with promise of a healthy harvest in summer.

As a club we can look forward to sharing the delights of the season as we hold our Bloom Competition at the October meeting and participate in the Cavalcade of Gardens on the afternoon of Saturday 8th October.

The Spring program for Open Gardens SA has been announced with some new gardens and many regulars included.

Parks and home gardens around Strathalbyn are all bursting into colour providing incentive for a casual stroll (or invigorating walk) to enjoy the display.

Norma Keily

\$10 Subs now due.

LES & LINDA CRANE & SONS – APIARISTS

Les is a 3rd Generation Bee Keeper, his grandfather started in 1920 cutting swarms out of trees. His son also now works in the business - 4th generation.

Their operation is at Belvidere.

◇ Les's father started with 24 hives, when he was 24 years old, in the Adelaide Hills which turned out to be too cold and he lost half his hives.

◇ Les followed his dad around and learned quickly as a child.

◇ 15 years ago, just as he was re-trenched from Telstra, a swarm arrived in his backyard – hence his new career.

◇ They produce 60 tons of honey a year and 600 kg wax per year

◇ The honey is stored in 1000 ltr IVC's and supplied in bulk to big honey suppliers.

◇ They are not allowed to put boxes into national parks anymore.

◇ They rely on private property owners to put the bees out. This is done on a handshake agreement and benefits both parties.

◇ Honey varieties include Canola, various Gums, Mallee etc.

◇ Their boxes will go into the almond plantations at the beginning of August.

◇ The stock is European bees. They have 2 sets of wings and 5 eyes. Asian bees are not a good idea.

◇ It's amazing how the bees know what is happening in the field well before we do.

◇ They all have their jobs, nurses, guards, drones and the queen. They all work together. The life span for workers is 6 weeks. The Queens live 2 to 5 years

◇ Breakdown of the box (hive):

◇ 21 days to fill the box

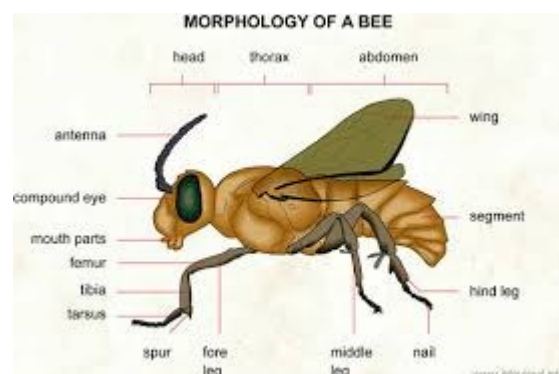
◇ Needs constant temp of 97 deg.

◇ Bees attracted to blue and travel up to 5km

◇ Diseases spread quickly and it is the guards' job to keep out intruders from other boxes.

◇ In order to help bees we should eliminate chemical spraying. Weeds (dandelions, soursobs etc) are good for bees – people are bad.

◇ Les had a box to show and the inside sections were passed around for a closer look.



HONEY BEE FACTS

* Honey bees are environmentally friendly and are vital as pollinators.

* Honey is the only food that includes all the substances necessary to sustain life, including enzymes, vitamins, minerals, and water; and it's the only food that contains "pinocembrin", an antioxidant associated with improved brain functioning.

* Honey bees have 170 odorant receptors. Their sense of smell is so precise that it could differentiate hundreds of different floral varieties and tell whether a flower carried pollen or nectar from metres away.

* The average worker bee produces about 1/12th teaspoon of honey in her lifetime. A honey bee visits 50 to 100 flowers during a collection trip.

* A colony of bees consists of 20,000-60,000 honeybees and one queen. Worker honey bees are female, live for about 6 weeks and do all the work.

* Beeswax has a multitude of uses.

STRATHALBYN GARDEN CLUB PROGRAM

MEETING DATE	SPEAKER/ACTIVITY	TOPIC FOR DISCUSSION
August 26th	Wendy Phillips and Bob Daly	Birds in the garden
August 31st	Pick up Neutrog order	Walsh Avenue 9.30am - 1.00pm
September 23rd	Gil Holamby	Butterflies in your garden
October 8th	Cavalcade of Gardens	5 Gardens to view around Strathalbyn
October 28th	Bloom Competition	Flower arranging Demonstration
November 25th	Celebratory Lunch	Oasis Langhorne Creek Rd Belvidere
December 23rd	Almost Christmas	NO MEETING



Neutrog Pickup Wednesday 31st August

Walsh Avenue (Off Ashbourne Road) 9.30 - 1pm

1. Take the copy of your order form to the pickup location to confirm your order.
2. Problems with collecting your order to the Neutrog Order co-ordinator Frank Chapman 0466 416 314

SA IRIS SOCIETY

Weekend with Barry Blyth Australia's World Renown Iris Grower & Hybridizer

Saturday 17th - Sunday 18th September 10am - 4pm
Sporting Car Club of SA Garden Room 51 King William Road Unley

Registration from 9am Saturday

\$40 for two days light lunch & refreshments included.

Contact Julia Jacobs 0421 379 644

flowers43@bigpond.com

RSVP 9th September 2016

SA IRIS SOCIETY ANNUAL SHOW

SATURDAY OCTOBER 22ND 11AM - 5PM

SUNDAY OCTOBER 23RD 10AM - 4PM

GOODWOOD COMMUNITY CENTRE

32 ROSA ST GOODWOOD

ADMISSION \$3 ADULT, CHILDREN FREE

For Sale: Iris rhizomes - tall bearded, Pacific Coast iris, Japanese Iris, Louisiana Iris and Spuria.

Demonstrations both days @ 2pm

Saturday - All about iris

Sunday - Ikebana

Trading Table

Refreshments available

COMPOSTED PIG MANURE

\$7.00 per 27 litre bag

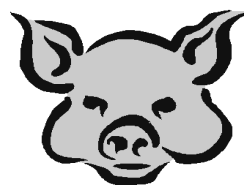
Free delivery in Strathalbyn

Phone 8536 2628

Ros 0428 362 628

Brian 0438 362 628

Practically odourless!



GREG THE WORM MAN 0438 808 066

Kilo packs of composting worms

Vermicast for soil improvement

Worm Farms to order

Worm Wee 3 litre & 20 litre containers

Catch me at the Strathalbyn Garden Club meetings!

SHEEP MANURE for Sale

\$5 / bag (delivered to Strath)

\$5/ bag (collected from farm)

\$20 / collected in trailer, i.e. 6'.4'

Tania & John Richardson

Woodchester

85375011

We're happy to make your garden happy! Spread the word.

GARDEN CLUB

END OF YEAR CHRISTMAS LUNCH

FRIDAY NOVEMBER 25TH.

Oasis Gardens & Function Centre

Langhorne Creek Road Belvidere

12 midday for 12.30pm

2 course meal (main & sweets) \$36.00 pp

\$10 deposit at July 22nd meeting.

Balance of \$26 by October 28th meeting.

Partners and friends welcome.

Mention dietary requirements at the time of booking.

Put aside just \$2 per week for the next 20 weeks to cover the cost!

(No refund for late cancellation)

Good Food! Good Friends! Good Fun!



SPOILT FOR CHOICE

Here in Strathalbyn we are fortunate to have an interesting range of places to visit to buy our gardening needs. and for gardening retail therapy.

Mud and Moss the florist, besides the fragrance of flowers has a delightfully eclectic range of garden oriented gifts. They stock traditional open pollinated vegetable seeds from local supplier Heirloom Harvest.

The Market Shed also stock packets of seeds for herbs, vegetables and flowers from Eden Seeds which is also labelled as Select Organic. How can we not want to propagate seeds with exotic names like *Marianne's Peace tomato* or *Cabbage Michihli*?

Mitre 10 on South Tce has a well stocked garden section of fresh, healthy plants with new deliveries weekly.

The monthly Strathalbyn Market on the third Sunday of each month usually has a couple of sites selling seedlings and well developed annuals and perennials.

The Potting Shed on Sunter has an intriguing rustic ambience and a colourful range of cottage garden plants, fruit trees, shrubs and seedlings as well as an interesting variety of gifts and nic nacs for the garden.



Open from Wednesday to Sunday there will always be something new and desirable on display.

Swanson's Nursery and Gifts down on the Callington Road, formerly of Littlehampton, is settling in to its new home. Chris Swanson plans, in time, to create a homely ambience with chooks roaming around between the well stocked display stands.

Having enjoyed visits to the Littlehampton Nursery we look forward to regularly seeing how the new nursery develops.

Adelaide Hills Garden Supplies Off the roundabout heading into Hahndorf from the freeway are further afield but they have recently refurbished their garden supply area and they are soon to open a showroom for outdoor furniture.

Browse in and Save always has a stand of well developed flower, herb and vegetable seedlings at their front door and when planted out they do well.

This not an exhaustive list of local nurseries and garden suppliers but when shopping for plants or any other garden requirements - sprays, fertilisers, potting mix or tools, local knowledge is always invaluable. An added bonus could be what is saved in travel time and fuel costs can be devoted to the garden and the local community benefits from your support.



PREPARING FOR SPRING IN THE GARDEN

PREPARE YOUR SOIL:

Now is the time to get digging and start sowing ready for spring. Get your soil ready by weeding and digging over, preferably incorporating some well-rotted compost and a sprinkle of complete fertiliser.

SOWING SEEDS

Many seeds can be started in punnets - Tomatoes, Cucumbers, Silverbeet, Capsicum and Zucchini, Pumpkin. Keep warm in a mini greenhouse or on a sunny window sill.

These should be ready to plant out in 6 weeks.

DIRECT SOWING:

Start sowing out all the direct-sow vegetables like Corn, Beans, Beetroot and Peas, remember to soak them in water for 10 minutes before sowing them direct into the bed, covering them over lightly to settle them in. With small seeds like lettuce, carrot and spring onions, the trick is to mix the seed with fine dry sand in a jar, drill a 5cm hole in the lid and dribble the seed/sand mix in a neat line in the garden bed. By doing this, you spread the seed evenly.

SUCCESSIVE PLANTING

Remember with Beets, Carrots, Spring Onions and Lettuce, sow a 1m bed *each month* so you harvest across three

months rather than have them ready to use all at once.

KEEP THEM MOIST:

Water all freshly planted seeds straight away with a gentle spray and keep them moist for a week or so until they have germinated. A shade cloth over the bed will stop the sun drying out the soil – just make sure to remove it once you have some green shoots. At this stage beware of all the hungry slaters, slugs, snails and earwigs.

REMEMBER ...

Weed and water regularly and a dash of liquid fertiliser is often welcome.

BUT WAIT THERE'S MORE

Fruit trees need spraying and fertilising and weeds cleared from around the trunk. Mulching is also a good idea to conserve soil moisture.

The flower garden probably needs some potted colour, definitely

needs fertilising and weeding and perennials which missed their autumn trim could be pruned.

FINALLY

Check the hoses and fittings for drips, cracks and leaks, replacing washers and O rings. Flush out dripper lines and clear blocked nozzles.



OPEN GARDENS SOUTH AUSTRALIA

SPRING 2016 PROGRAM

UPDATED AUGUST 14, 2016

September

3—4

Looking Glass Garden, Marino: 2 Caroline Road

Avondale, Rhynie: 146 Avondale Road

10—11

Thorn Grove, Stirling, 2 Glenside Lane

17—18

Boat's End, Currency Creek, 191 Adelaide Place

Elderhood House, Port Lincoln, 12 Prospect Road

Grand Cru Estate, Springton, Lot 274 Landers Road

Rosie & Micks Garden, Springton, 4 Graetz Terrace

24—25

West-lee, Rhynie, 327 Woolshed Flat Road

Wirapunga Indigenous, Aldgate: 7 Williams Road

25 (Sunday only)

Beaumont House, Beaumont, 631 Glynburn Road

October

1—2

Possum Park, Mount Barker, Cnr Native Ave/Hunt Rd

Dunedin, Strathalbyn, 16 Fairfield Drive

Sunday 2—Monday 3

Albu Farm Plant Fair, One Tree Hill: Black Top Road

8—9

Yallum Park, Penola, 4325 Mt Burr Road

Tickletank, Mount Barker: 24 Hill Street

Viterbo, Leabrook, 7 The Parkway

Woodhill, Hope Forest, 86 Verrill Road

15—16

Baroona, St Peters, 43 Fifth Avenue

A Room with a View, Maylands, 1084 Frederick St

22—23

Beard Garden, Norwood: 134 Beulah Road

Kenwyn, Bordertown, 455 Sliding Road

Curlew Park, Mundulla, 43 Chark Road

Crecoona, Bordertown, 100 Crecoona Terrace

Triatucka Homesteads Gardens, Port Lincoln

23 (Sunday only)

Bloomin Acres, Wistow, 20 Harrop Road

29—30

Gate Cottage, Mylor: 66 Leslie Creek Road

Ashgrove Iris Garden, Gumeracha: 53 Albert Street

Windspiel, Upper Skut, 2 Parkgate Place

Watson Garden, Mt Gambier, 19 Bertha Street

My Gralunga, Mt Gambier, 41 Rudwoldt Rd, Yahl

Sanity Garden, Tumby Bay, 17 Pearson Street

November

5—6

Anna's Garden, Clarence Gardens, 46 Gladys Street

Mandalay, Mt Barker Springs, 271 Rock Collington Rd

Sciematley, Penola, 410 Shepherds Lane

Carinya, McLaren Flat, 82 Elliott Road

6 (Sunday Only)

Kirkliston, Balhannah, 112 Camac Road

12—13

Hatherleigh Cottage, Aldgate, 7 Linwood Avenue

Jennings Garden, Mt Gambier, 16 Turnbull Drive

19—20

Seafeld, Kingswood, 25 Seafeld Avenue

Walnut Hill, Crafters: 5 Walker Street

Roach Garden, Crafters, 7 Walker Street

Heatherby, Stirling, 29 Longwood Road

Wyndbourne Park, Forest Range, 258 Mowson Road

26—27

Bron's Tiger Garden, Lower Mitcham: 13 Grange Rd

The Artist's Garden, Westbourne Pk: 9 Richmond Rd

Kinclaven, Crafters, 56 Waverley Ridge Road

December

3—4

Kurrawittra, Aldgate, 292 Mount Barker Road

Beverina, Aldgate, 2 Silver Road



OPEN
GARDENS
SOUTH AUSTRALIA

For more details on the garden
openings and special events go to
opengardens.org.au

